

Quickstart Guide

RØDE NT-USB MICROPHONE



The Rode NT-USB is a plug and play microphone they connects to your computer via a USB cable. It is compatible with both Windows and Apple.

In most cases, when you plug in the Rode NT-USB microphone it will automatically become your default input device.

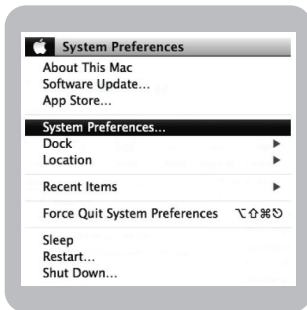
The monitor mix control dial will control the level of mix you hear through the headphones plugged into the recorder. Turning the dial to the left will mean you hear more of the direct microphone signal, turning it to the right, will mean you hear more of the computer audio.

The headphone volume control allows you to control the volume of playback through the attached headphones (If you are using any)

For best results have the microphone at face height, roughly 15 cm from your mouth.

Adjusting the input Volume

Apple



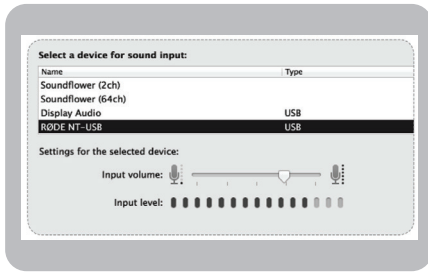
Step 1:

Click the Apple icon at the top left, and select “System Preferences”



Step 2:

Type ‘Sound’ in the search box, and select “Choose your input Device”



Step 3:

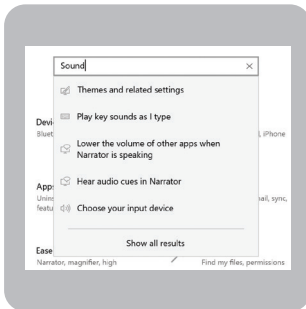
Open the 'Input' Tab, Select RODE NT-USB and Adjust the input volume

Windows



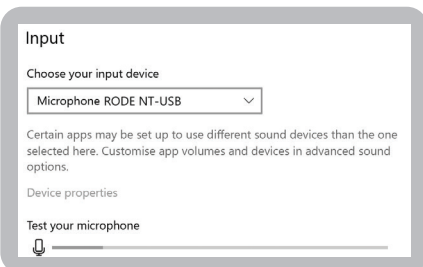
Step 1:

Open System settings.
(Type 'Settings' into the search bar, bottom left next to the windows button)



Step 2:

Type 'Sound' in the search box, and select "Choose your input Device"



Step 3:

Under 'INPUT' Ensure RODE NT-USB is selected from the drop-down.

To increase the volume, click on 'Device Properties' and increase the volume.

For more help, contact:
lih-sst@mq.edu.au